

**NBS Specification**

L10 - Windows / Rooflights / Screens / Louvres  
460 - Rooflights

**Manufacturer :** National Domelight Company, Pyramid House,  
52 Guildford Road, Lightwater, Surrey GU18 5SD  
Tel 01276 451555 Fax 01276 451533 E-mail [info@nationaldomes.com](mailto:info@nationaldomes.com)  
**Product Reference :** Therma-Vent 140°

**Type :** Roof Hatch

**Size :** Specify from Product literature

**Frame :** N/A

**Kerb :** Therma-Kerb PVCu 300s. Height 300mm

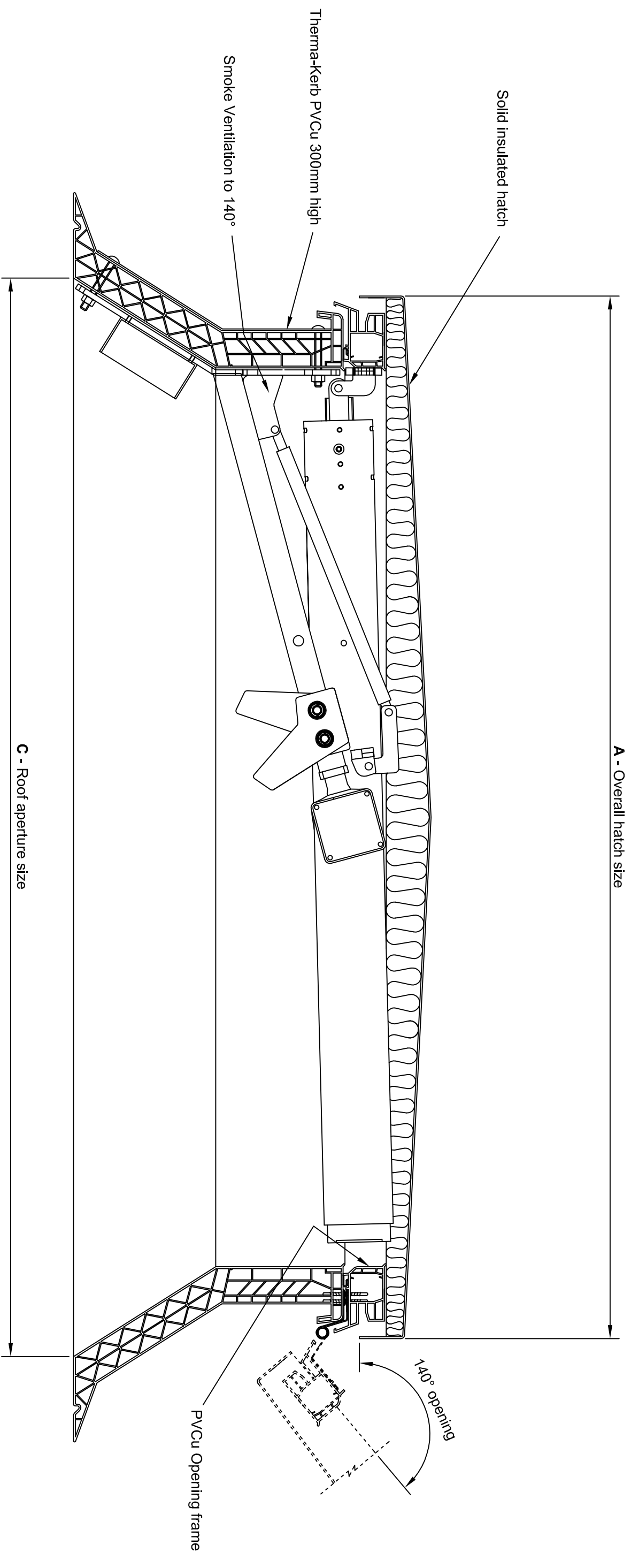
**Material :** PVCu - white self finish

**Glazing details :** Solid insulated aluminium hatch

**Finish :** Mill-finish

**Other requirements :** PVCu opening frame for smoke ventilation  
by electric actuator to 140°

**Fixing :** Please consult National Domelight Company for recommendations



National Domelight Company  
DRG No 2655

Solid insulated aluminium mill finish hatch  
complete with splayed Therma-Kerb PVCu 300mm high and  
PVCu Hatch frame for smoke ventilation by electric actuator to 140°  
installed to prepared roof aperture