

**NBS Specification**

L10 - Windows / Rooflights / Screens / Louvers  
460 - Rooflights

**Manufacturer :** National Domesight Company, Pyramid House,  
52 Guildford Road, Lightwater, Surrey, GU18 5SD  
Tel 01276 451555 Fax 01276 451533 E-mail [info@nationaldomes.com](mailto:info@nationaldomes.com)  
**Product Reference :** Therma-Vent 140°

**Type :** Dome

**Size :** Specify from Product literature

**Frame :** N/A

**Kerb :** Therma-Curb PVCu 150v. Height 150mm

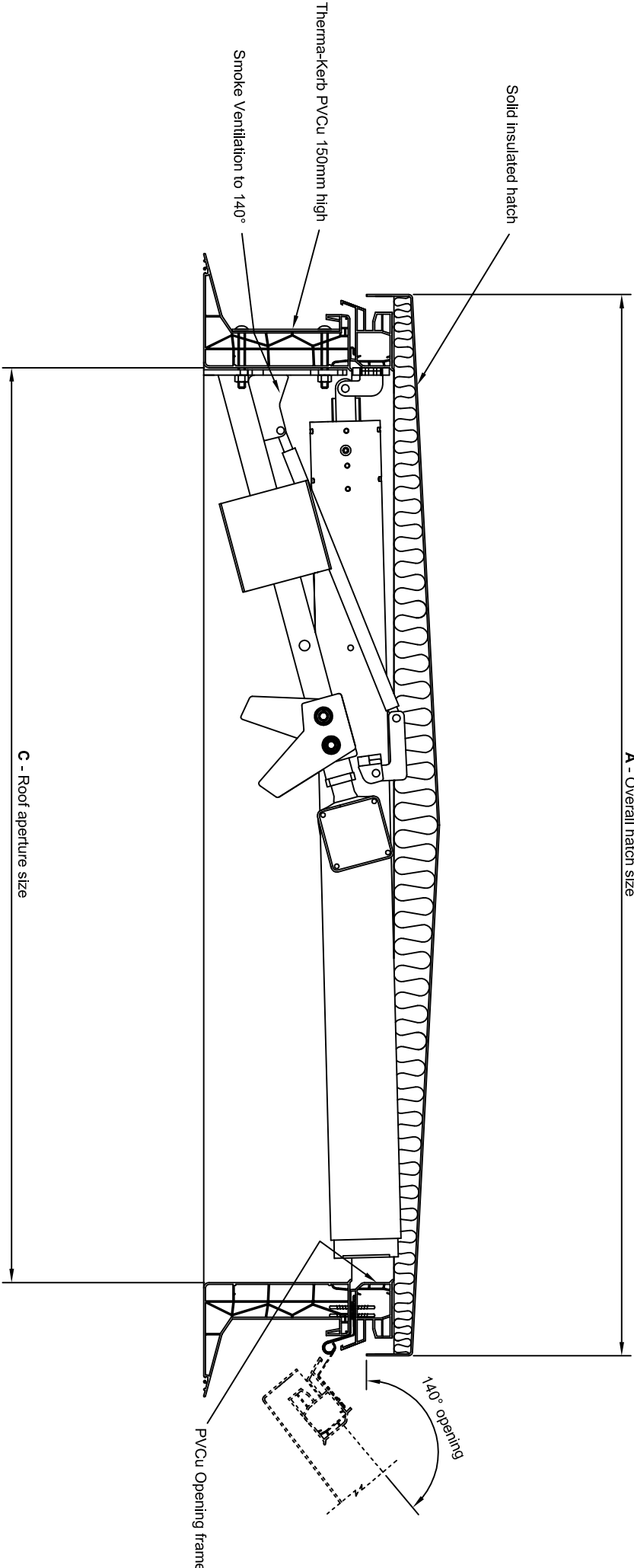
**Material :** PVCu - white self finish

**Glazing details :** Solid insulated aluminium hatch

**Finish :** Mill finish

**Other requirements :** PVCu opening frame for smoke ventilation  
by electric actuator to 140°

**Fixing :** Please consult National Domesight Company for recommendations



National Domesight Company  
DRG No 2635  
Solid insulated aluminium mill finish hatch  
complete with vertical Therma-Kerb PVCu 150mm high and  
PVCu opening frame for smoke ventilation by electric actuator to 140°  
installed to prepared roof aperture